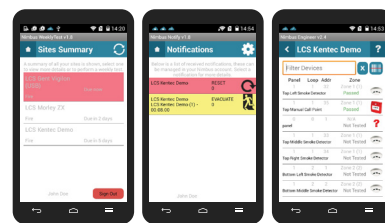
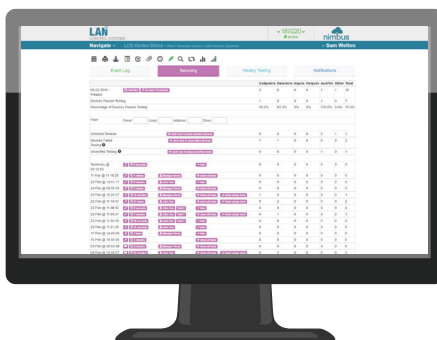


Nimbus

Nimbus is an innovative fire alarm management system providing control and monitoring wherever you are

Nimbus works as a non-intrusive add-on to a fire alarm control panel. Nimbus communicates all activity to a cloud hosted database. Activity is recorded to an infinite log. Users access Nimbus through any desktop or mobile internet connection.



Generate reports

Reports can be generated to match the users search criteria such as Date, Time, Site, Panel, Loop, Device and Event.

Record weekly tests

Weekly tests are recorded to a purpose log for compliance reporting. Service Testing is recorded to a purpose log for compliance reporting.

Receive event notifications

Receive Fire, Fault, Isolation, etc. by email, mobile phone application and secure I.P. networking. Notifications include the device location description details as programmed within the fire alarm control panel/s.

Record additional data to device activity

Mobile phone applications allow service and test data to be centrally recorded. Engineering performance is improved by the use of mobile phone interaction.

Connects to most UK fire alarm control panels

Nimbus is compatible with most UK analogue addressable fire alarm control panels and presents the system status and data in a simple to use common format.

Independent evidence of testing

Nimbus records the actual Fire Alarm control panel activity, recording specific details of individual device status and identity information.